

How to Make Your Own Packages to Use in GreenTea Gotcha

**Rattapoom Waranusast
Phitsanuloke, Thailand**

rattapoom@hotmail.com

<http://www.greentea.20m.com/Gotcha>

1. Introduction

Since I have received many e-mails that ask me for new packages of images, and ask me about how to make their own ones. This document is the answer of how to make them. The package contains many files, so there are many steps to create these files. The followings are steps to create *GreenTea Gotcha* (GG) package.

2. Necessary Files

GG package contains 3 types of file, image pair itself (*.jpg), information of different areas on each image pair (*.pos), and package information (*.gcp). The details of these file types are shown below.

2.1 Image files

Images used in GG are JPEG format and must have .JPG or .jpg extension. *These JPEG images must have 350 pixel-width and 380 pixel-height.* They can be any of compression level.

2.2 Different Position Files

In order to determine the different positions, the GG program has to use some extra information beside the content of image. I defined different areas as 5 rectangles (There are 5 differences between 2 pictures) as shown in Fig 1.

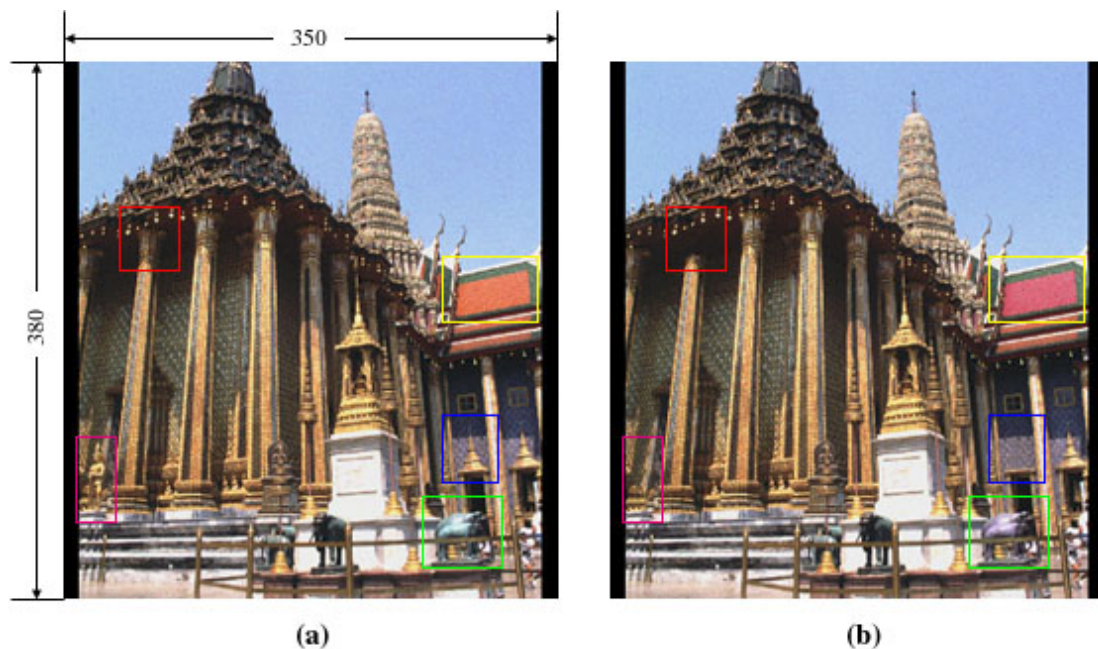


Fig 1. Example of different areas on images.

Because a rectangle can be defined as 2 points (coordinates), top-left point and top-right point as illustrated in Fig 2a. Thus, we can save our defined area as 4 integers, that is, leftmost, topmost, rightmost, and bottommost, as shown in Fig 2b.

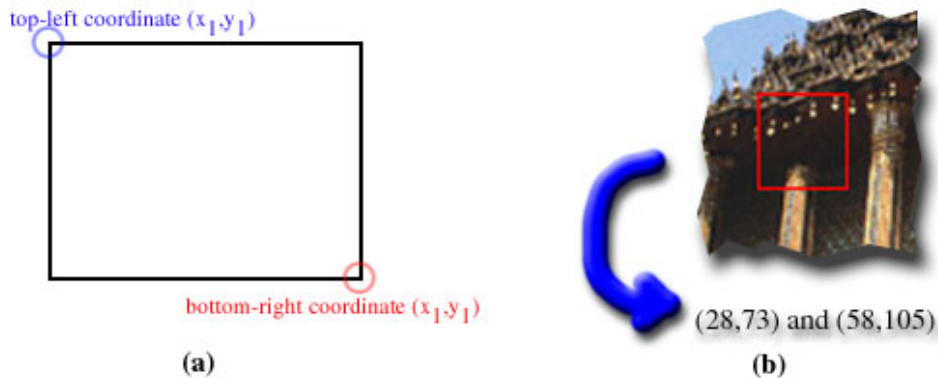


Fig 2. Illustration of representation of rectangle (a), and Example of conversion of defined area to number (b).

So, I defined structure of file that stores information of different areas (*.pos) as below.

Line	Information	Example
1	First different area	291 80,327 102
2	Second different area	139 112,159 132
3	Third different area	80 136,125 162
4	Fourth different area	200 97,242 184
5	Fifth different area	185 300,215 323
6	First image file name	barge11.jpg
7	Second image file name	barge12.jpg

Notice that, the rectangle information in line 1-5 contains 4 integers, 2 spaces, and 1 comma. The first two integers are the leftmost position and the topmost position of area respectively, and they are separated by a space. The rest two integers are the rightmost position and the bottommost position of area respectively, and they are also separated by another space. These two pairs of integer must be separated by a comma. Value of first and third integers can be 0 to 349 while value of second and fourth integers can be 0 to 379.

The sixth and seventh lines in file are the image file names as mentioned before in Section 2.1. These image files must be in the same folder as .pos file. Fig. 3 shows a screen captured of Notepad while creating this file type.

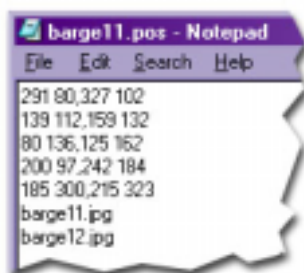


Fig 3. Screen captured of Notepad in creating a .pos file.

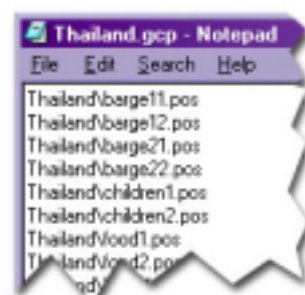


Fig 4. Screen captured of Notepad in creating a .gcp file.

2.3 Package Information file

This file (*.gcp) contains every different position file (*.pos) names of each package. The format of this file type is below.

Line	Information	Example
1	First .pos file	Thailand\barge.pos
2	Second .pos file	Thailand\temple.pos
3	Third .pos file	Thailand\food.pos
4	Fourth .pos file	Thailand\children.pos
:	:	:

Because this file (*.gcp) must be kept in upper level folder of .pos files, .pos files' folder must be stored in .gcp file before .pos file names and separated with back slash (\) e.g. *Thailand\barge.pos*. Fig. 4 illustrates a screen captured of Notepad while creating this .gcp file.

3. Creating a Package

This section describes on how to create your own package in step-by-step style. I suppose that you installed GG in folder *C:\Program Files\GreenTea\GreenTea Gotcha 1.02*, so that, your package folder is *C:\Program Files\GreenTea\GreenTea Gotcha 1.02\Packages*.

1. Create a folder within your package folder like this *C:\Program Files\GreenTea\GreenTea Gotcha 1.02\Packages\Example*.
2. Create or edit your pair of 350x380 JPEG image (*.jpg) with 5 different positions by the use of image editing programs (I use Adobe Photoshop) and then save them in the folder created in Step 1. I suppose *sample_pic1.jpg* and *sample_pic2.jpg*.
3. Create a .pos file (See Section 2.2) with 6th and 7th lines are *sample_pic1.jpg* and *sample_pic2.jpg* respectively. I suppose *sample1.pos*, then save it in the same folder as .jpg files in Step 2.
4. Repeat Step 2 and Step 3 until all of your desired sets of image are created.
5. Create .gcp file (See Section 2.3). I suppose that you created 3 sets of image so your *example.gcp* will look like below and the save it in package folder.

```
Example\sample1.pos  
Example\sample2.pos  
Example\sample3.pos
```

6. Test your package you created with GG.

4. Conclusion

I suppose that the previous sections can guide you to create your new packages to play with GreenTea Gotcha. I plan to create an automatic tool to help creating of packages in the future. If you follow this guide to create your own packages and want to share yours with other, I will appreciate to publish your packages on my web site. Please feel free to send me any suggests and comments.